

Word Engine Health Science Programs

powered by **lexica**

Dr. Charles Browne
Professor of Linguistics
Meiji Gakuin University
Director, Lexxica Corp.
cbrowne@lexxica.com

Guy Cihl
Director
Lexxica Corp.
gcihl@lexxica.com

Problem No. 1



Successful completion of any medical diploma or degree requires mastering several thousand special words and terms.

For example...

fibromyalgia

immunological

cholagogue

carminative

Problem No. 2

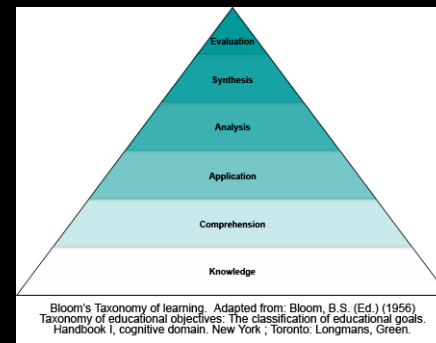


First-year drop out rates are high and costly.

Many cite the onslaught of health sciences “jargon” as a primary source of frustration.

Foreign students face the greatest challenge.

Problem No. 3



Each student has a different level of ability in each subject. Which *specific* words are needed to increase their comprehension?

Problem No. 4



Even if we knew which words to teach, the classroom is not a good place to teach vocabulary.

What can be done?

V-Check®

An accurate and reliable
vocabulary test.

Solution No. 1 V-Check

Regardless of user ability, from beginner to PhD, V-Check identifies the specific vocabulary needs of each learner for each subject.

V-Check prepares a personal list of target words for each student. The exact words needed to quickly increase their subject comprehension.



Solution No. 2 Learning Tools

Online learning tools rapidly teach the vocabulary needed to increase comprehension.

The learning tools use spaced-repetition to promote long-term memory retention.

V-Admin

Automatically organizes V-Check scores and progress data.

Solution No. 3 V-Admin

The V-Admin service allows teachers to easily monitor student ability and learning progress.

Teachers can accurately place a student into a supportive learning group with a mix of abilities.

The Word Engine requires very little classroom time because the learning process is autonomous.

Lexical coverage analysis



Lexical coverage describes the percentage of known words in a text.

If there are too many unknown words the meaning of the text cannot be understood.

How many is too many?

Medical text at 80 percent coverage

13 of 64 words missing

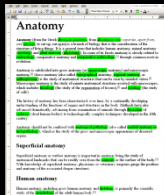
Faligiamobry and multiple chemical sensitivities (MCS) are, like FSC, recently recognized disorders with a substantial overlap of amoplygootmyst. The only difference in dogsinctia criteria for faligiamobry and FSC is the requirement of kalluesclutsome pain in faligiamobry and fatigue in FSC. The likelihood of a patient being diagnosed as having faligiamobry or FSC is dependent upon whether a tohmerualogist or an potherodic specialist is consulted.

Medical text at 95 percent coverage

3 of 64 words missing

Fibromyalgia and multiple chemical sensitivities (MCS) are, like CFS, recently recognized disorders with a substantial overlap of amoplygootmyst. The only difference in dogsinctia criteria for fibromyalgia and CFS is the requirement of musculoskeletal pain in fibromyalgia and fatigue in CFS. The likelihood of a patient being diagnosed as having fibromyalgia or CFS is dependent upon whether a tohmerualogist or an orthopedic specialist is consulted.

Universal coverage thresholds



Below 80 percent coverage, reading comprehension is almost impossible. (Hu & Nation, 2001)



Above 95 percent coverage, it becomes possible to read without using a dictionary. (Laufer, 1989)

The Goal

The goal is to get as many students as possible to 95% coverage as quickly as possible.

How can we best do that?

Corpus analysis

Ex: Gray's Anatomy

212,440 total words

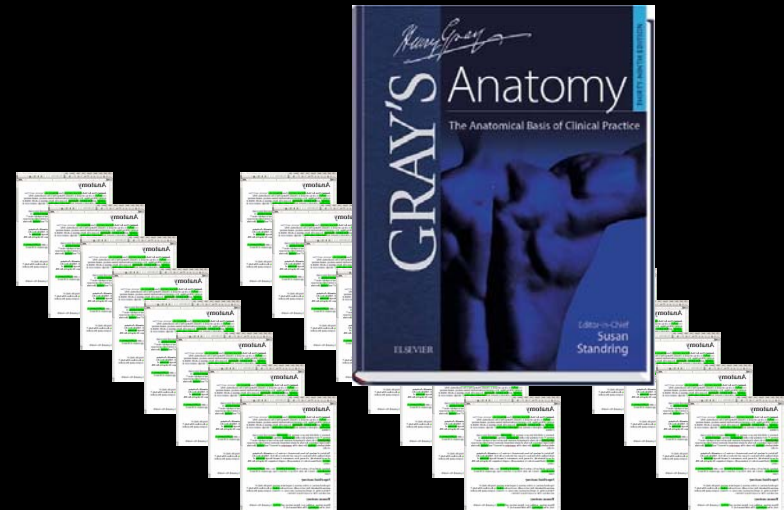
8,751 different words

6,211 words constitute 99% of all of words occurring

4,109 words constitute 95% of all of words occurring

3,200 of the 6,211 words are general English vocabulary

Students need from 1,000 to 3,000 Anatomy-specific words



Preliminary Data

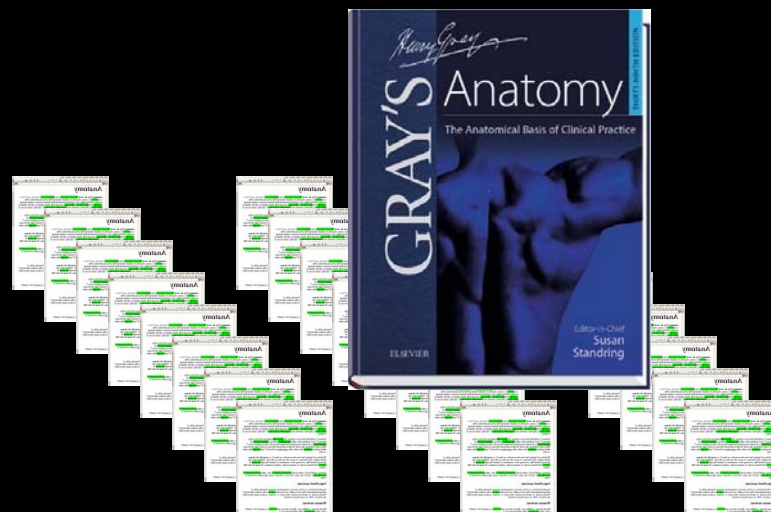
Corpus analysis

Gray's Anatomy

'tissue' occurs frequently

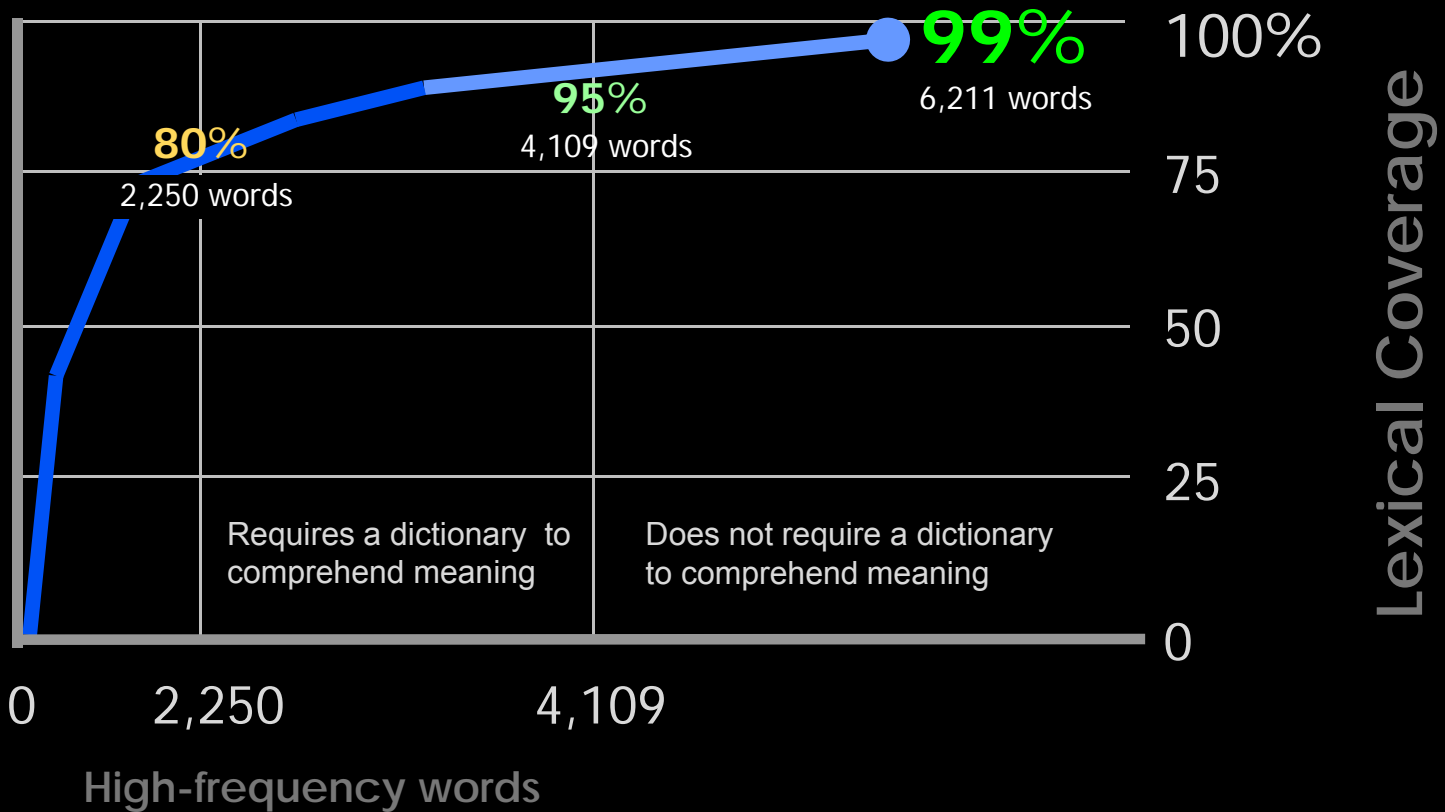
'carminative' is seldom used

The most frequently occurring words (high-frequency vocabulary) always contribute the most to coverage.



Preliminary Data

Relationship between frequency and coverage



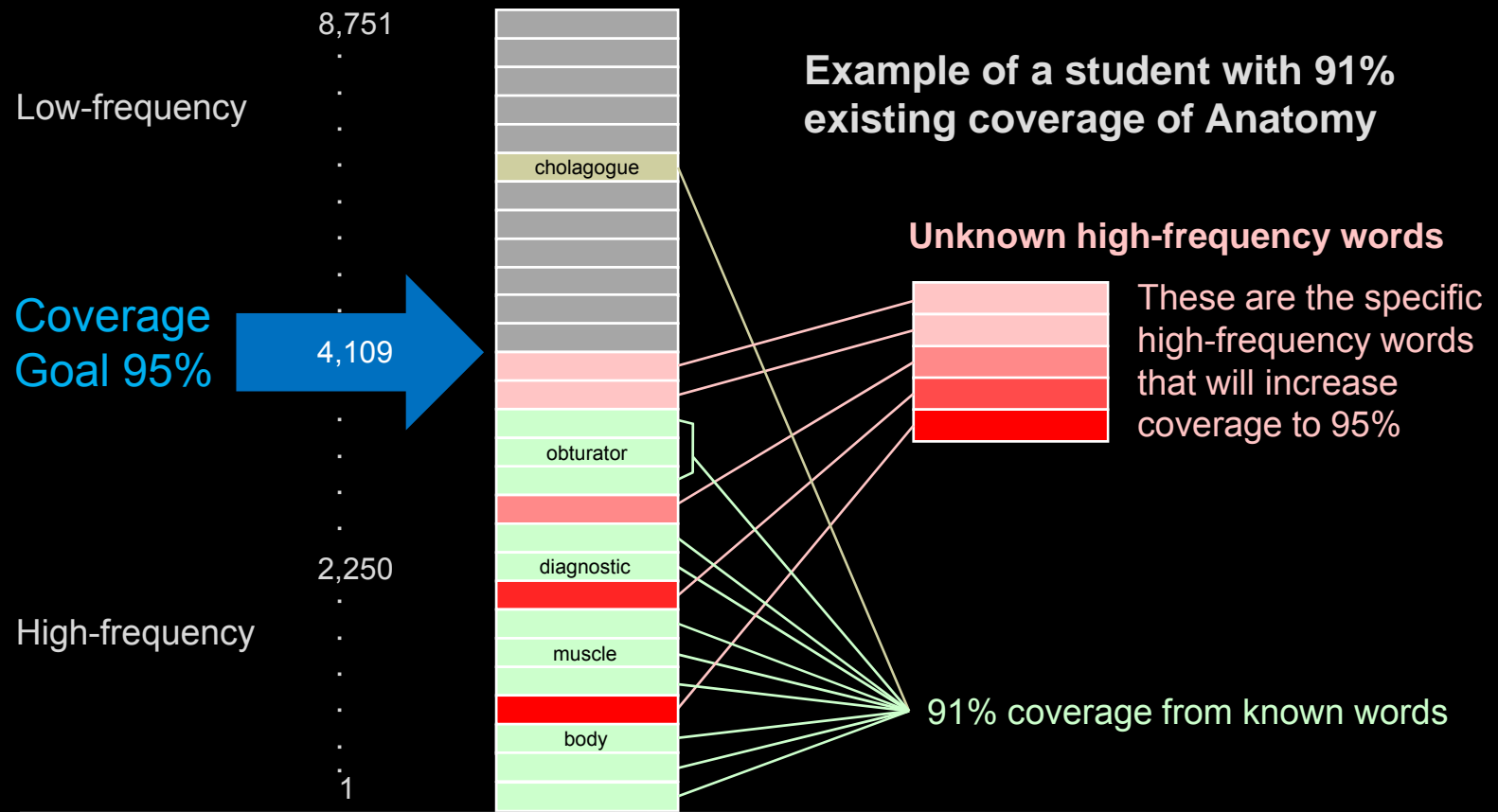
Preliminary Data

Corpus analysis tells us which words are needed to comprehend Anatomy.

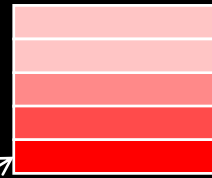
V-Check identifies which words each student is missing so they can focus their study time.

V-Check prepares a personal target word list for each student based on needs

Anatomy words ranked by frequency of occurrence



Optimal sequence of personal target words



Start here with the
highest frequency words

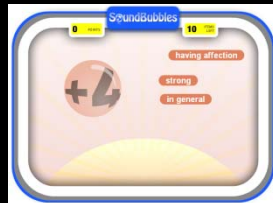
Online learning tools teach multiple aspects of word knowledge



Definitional knowledge



Visual recognition speed (automaticity)



Aural recognition speed (automaticity)



Definitional knowledge



n cholagogue

a substance that makes
the gallbladder contract

[Click to hear it](#)

[Click for complete definition](#)

Visual recognition speed



something that makes the
gallbladder contract

cholagogue

titers

peptide

Visual recognition speed – Multilingual



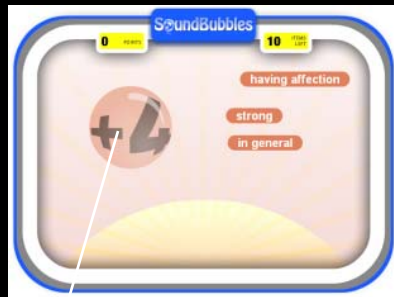
بروتين

cholagogue

titers

peptide

Aural recognition speed



Click to hear
it pronounced

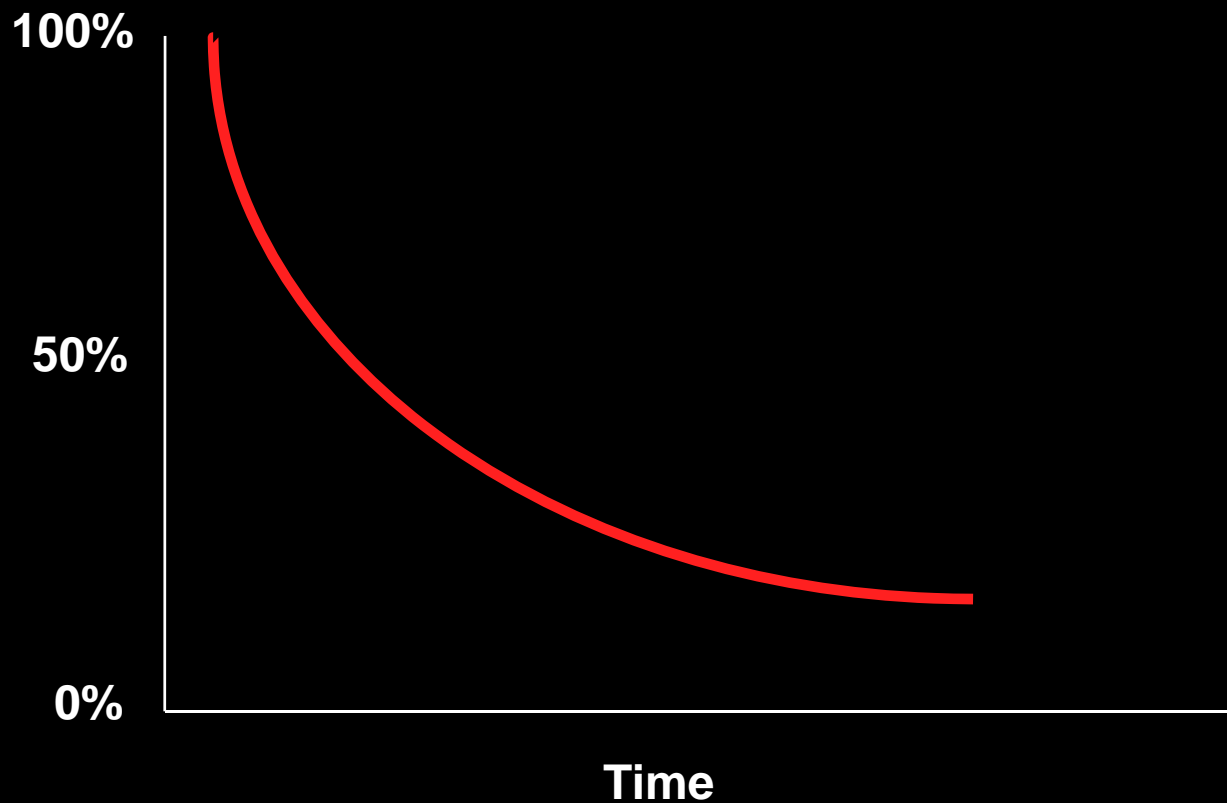
“peptide”

two or more linked amino acids

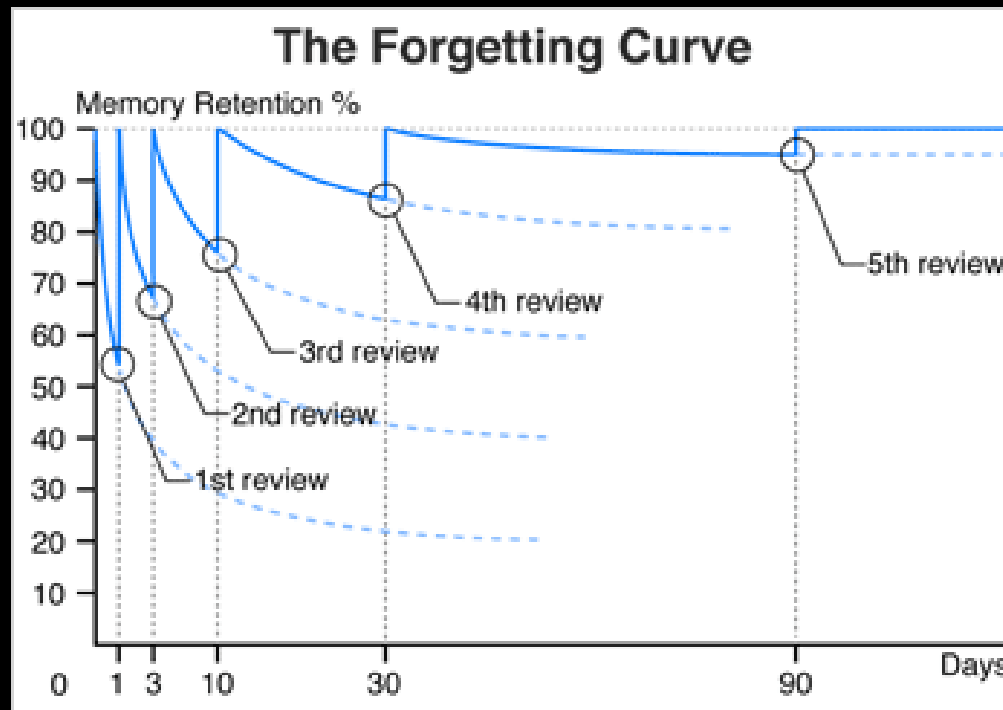
The concentration of a substance in solution

a substance that makes the gallbladder contract

How do we overcome short-term memory loss?



Dr. Ebbinghaus' Forgetting Curve

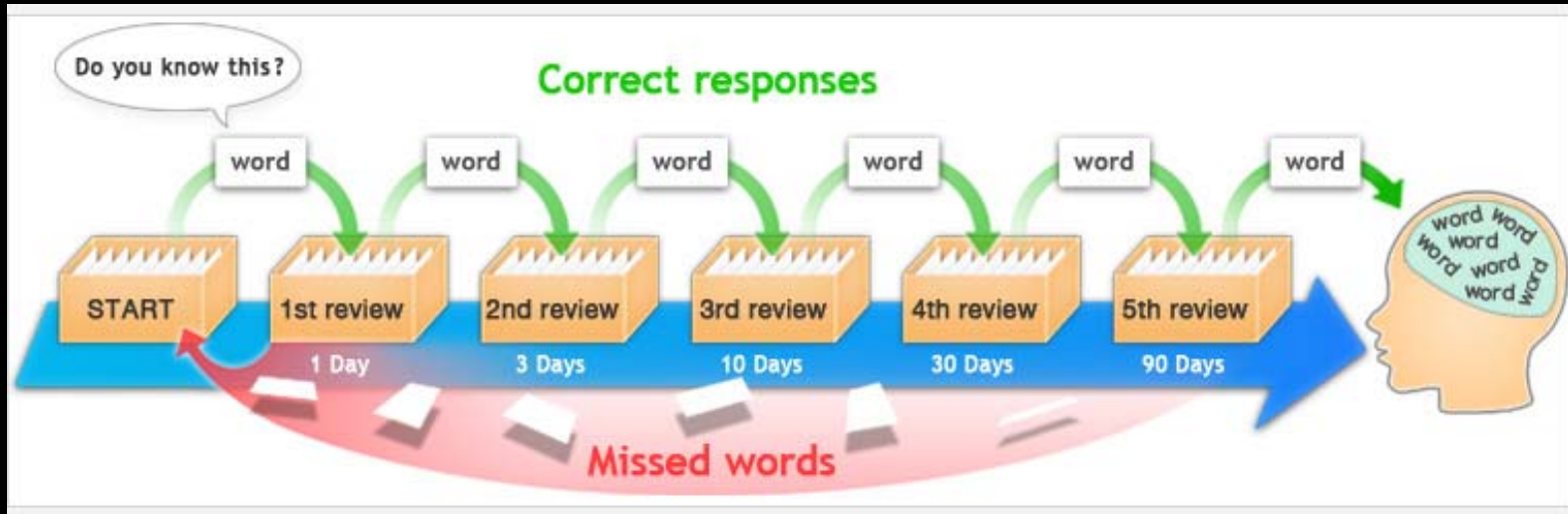


Ebbinghaus (1885), Leitner (1972), Pimsleur (1967), Mondria, (1994)

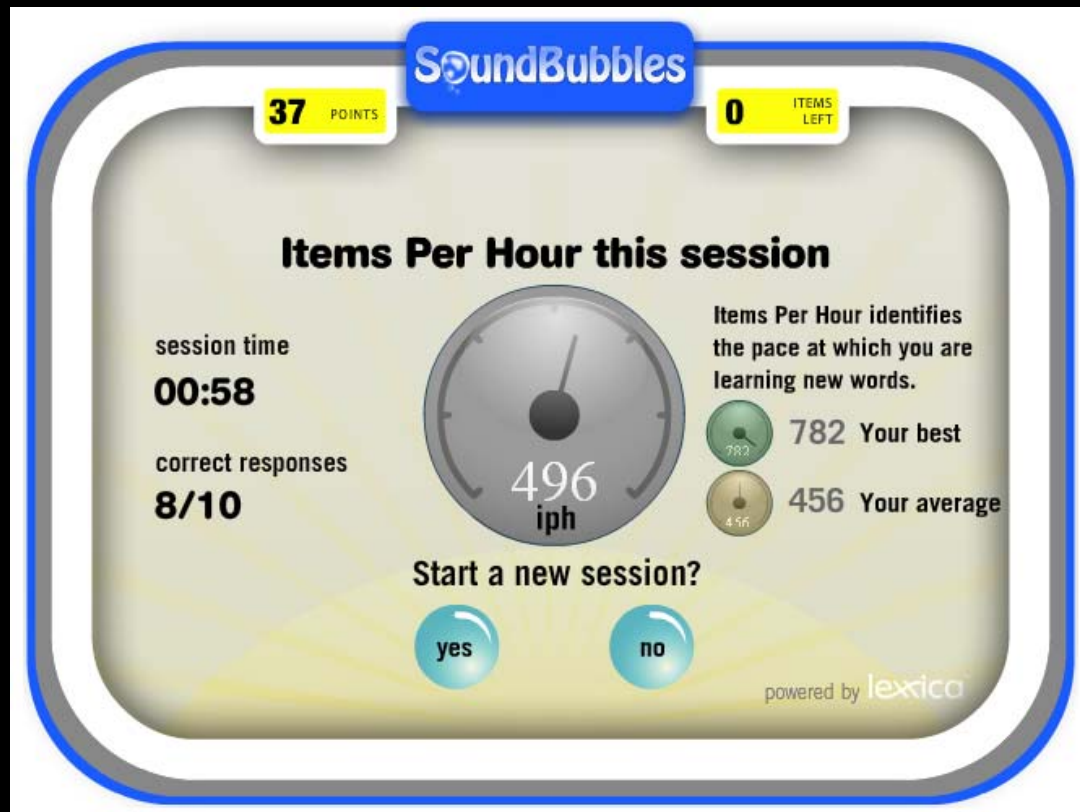
This research supports all spaced repetition systems

A personal spaced repetition database

Spaced repetition database repeats new words at increasing time intervals until each is fully acquired.



Learning tools provide progress feedback



Example Medical School Partnership

Lexica - Mozilla Firefox

File Edit View History Bookmarks Tools Help

http://dev2.lexica.com/acnm

Lexica Webmail - Login BigCharts Fidelity PrudentBear Gold Silver YouTube Yahoo Finance Yahoo! Mail Lexica Dictionary.com

username: password: login! Free signup!

Word Engine

My vocabulary coach

Increase your key vocabulary fast!

Learn the key vocabulary for any of these subjects!

Subject	Key Words	Coverage	Action
Pathology	5623	99%	Start now!
Anatomy	6211	99%	Start now!
Biology	5992	99%	Start now!
Chemistry	5421	99%	Start now!

The 5623 key words and terms that provide 99% coverage of your Pathology textbook and coursework.

The 6211 key words and terms that provide 99% coverage of your Anatomy textbook and coursework.

The 5992 key words and terms that provide 99% coverage of your Biology textbook and coursework.

The 5421 key words and terms that provide 99% coverage of your Chemistry textbook and coursework.

Research shows that learning key vocabulary is the fastest way for you to improve subject comprehension and performance!

The patented Word Engine starts by checking all of the words you already know, and then it rapidly teaches you the most important key words that you are missing in each subject you choose.

Finally, there's a quick and simple way for you to learn the important key vocabulary you need for academic and career success!

Done

Partner's logo

Coming September 2008

Word Engine
goes mobile...



Getting started

Partner enters license agreement with Lexxica.

Lexxica completes corpus analysis work.

Lexxica calibrates testing lexicons.

Lexxica prepares teaching definitions.

Partner distributes access codes to learners.